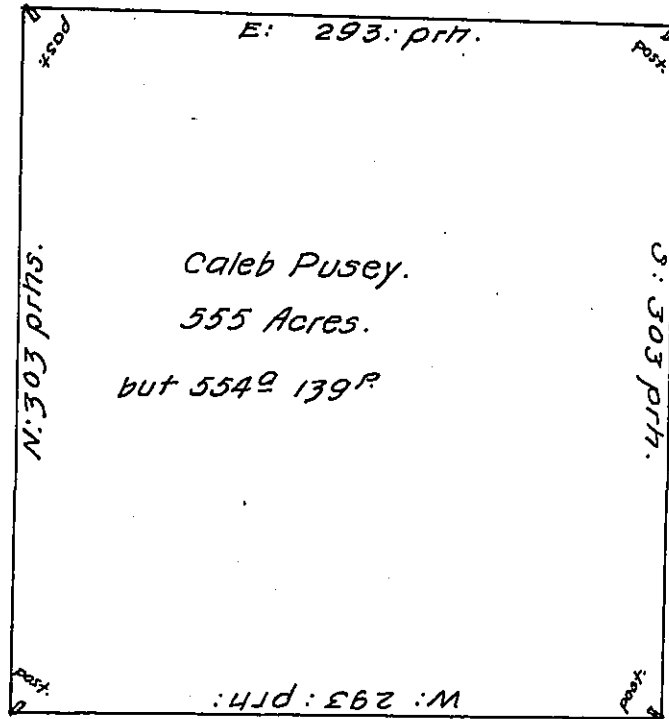


no. Sharpless Land.

Christ: Pennock Land.



Francis Worly Land.

GOV^t Mannour

To Edward Pennington Su^t Gen^l

By virtue of A warrant to me directed dated the 21st of the 12th month 170⁶
 Surveyed for Caleb Pusey A tract of Land in the Township of ——— Beginning at A
 Corner post standing in the Line of Francis Worly's Land by the side of a pond
 thence S. 303: prh: to a post standing in the Line of the Govr^s Mannour then
 by y^e sd. Line W: 293: prh. to A Corner post then N: 303 prh. to a Corn. post
 standing about one prh. south of A Corner hickery then E: 293 prh. to the place
 of beginng being surveyed for 555 Acres of Land the 2^d ²/_m, 1701.

Henry Hollingsworth, Dpt. Su^t

IN TESTIMONY that the above is a copy of the original remaining on file in
 the Department of Internal Affairs of Pennsylvania, made
 conformably to an Act of Assembly approved the 16th day of
 February, 1833, I have hereunto set my Hand and caused
 the Seal of said Department to be affixed at Harrisburg,
 this eighth day of September, 1909.

Henry Horner
 Secretary of Internal Affairs.